

## Built on Japanese medical standards but created with Filipinos in mind

As Shinagawa Diagnostic's most comprehensive health package, the **VIP Shinagawa Dock** focuses on the body's vital systems.

Guided by Japanese-standard healthcare principles, it prioritizes early detection and preventive care across:



Cardiovascular



Gastrointestinal



Neurological



Respiratory

This health package also helps identify and address the following conditions:

- Anemia & Leukemia
- Diabetes
- Pneumonia
- Stroke / Ischemia
- Colorectal Cancer

## Who should avail this package?

Adults aged 40 years old and above

Individuals with a family history of chronic diseases

People with gastrointestinal concerns such as a history of H. pylori infection, chronic gastritis, or family history of colorectal or stomach cancer

Those who prioritize preventive care and want to maintain long-term well-being

Professionals and executives seeking a comprehensive, one-stop health checkup for proactive monitoring

## About Us

Shinagawa Diagnostic & Preventive Care is a diagnostic center in the Philippines that offers a comprehensive range of Japanese-standard health screening services, imaging, and specialized diagnostics for the early detection and prevention of diseases.



8th and 23rd Floor, Ore Central Tower,  
9th Avenue cor. 31st Street, BGC,  
Taguig City 1630 Philippines

## MAKE AN APPOINTMENT

Contact Us at our Patient Care Lines:



Landline (+632) 7368-5241



Globe (+63) 917-864-6762



Smart (+63) 962-067-3669



info@shinagawa-healthcare.ph



www.shinagawa-healthcare.ph



 **SHINAGAWA**  
DIAGNOSTIC & PREVENTIVE CARE

# VIP

## Shinagawa Dock

Preventive Health Screening



## VIP Shinagawa Dock

Completed within the day or in 2 appointment days (for Colonoscopy and Colonoscopy & Gastroscopy procedures), here's a step-by-step overview of your appointment.

### 01 Check-in



Receive your Patient Gown & Hotel Slippers upon check-in.

### 02 Health Checkup Orientation



Our medical coordinator will provide a brief run-through of your procedures and essential tests.

### 03 Specimen Collection



Collect and submit urinalysis and stool samples using the provided patient invitation.

### 04 Physical Exam



Know your height, weight, body mass index, waist circumference, and blood pressure.

### 05 Blood Exam

CBC, FBS, HbA1c, Lipid Profile, Liver Function 1, Liver Function 2, Kidney Function, Uric Acid, Electrolyte, Infection, Tumor Markers, Thyroid, Heart

Our blood tests provide a broader look at various functions of the body. These exams also include tumor markers that can detect cancers.

### 06 Eyesight



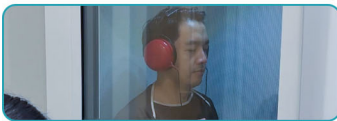
### 07 Tonometry



### 08 Fundus



### 09 Hearing



### 10 ECG



### 11 Chest X-ray



### 12 Whole Abdominal Ultrasound



### 13 Whole Abdominal CT Scan



### 14 Chest CT Scan



### 15 Brain MRI + Brain MRA + Neck MRA



### 16 Endoscopy Procedure

1. Transnasal Endoscopy (TNE);
2. Gastroscopy (Gastro);
3. Colonoscopy (Colon); or
4. Gastroscopy & Colonoscopy (Gastro-Colon)

### 17 Doctor's Consultation



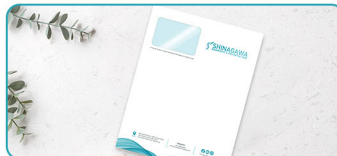
### 18 Nutrition & Dietetics Counseling



### 19 Same-day Laboratory Results



### 20 Check-out



### 21 Exclusive Privilege



With this package, patients will receive a Shinagawa Gion Bento, which they can enjoy at our Executive Lounge on the 8th floor.

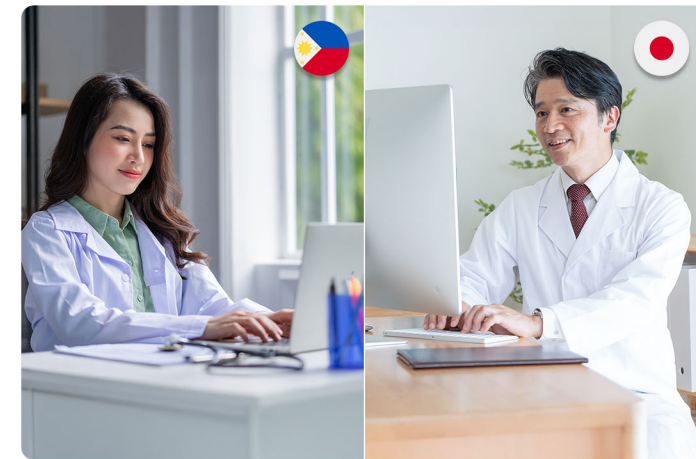
## Your Guide to Our Endoscopy Procedures

	TNE	GASTRO	COLON	GASTRO-COLON
Scope Insertion	Nose	Mouth	Anus	Mouth & Anus
Areas Examined	Upper digestive tract	Upper digestive tract	Lower digestive tract	Upper & lower digestive tract
Anesthesia	⊗	⊙	⊙	⊙

Legend: ⊗ Not applicable/ No ⊙ Applicable/ Yes

### Double-Reading Method

At Shinagawa Diagnostic, imaging results undergo double reading by both Filipino doctors and Japanese experts. For procedures like Chest CT and Brain/Neck MRI + MRA, this dual review ensures accuracy, minimizes oversight, and builds patient trust.



Our medical staff is extensively trained in the latest endoscopy techniques and advancements, with specialized training conducted both in the Philippines and Japan.