



A Health Package designed for Women

A woman's health is dynamic and deserves proactive care. Our Women's Prime Executive Health Checkup offers a comprehensive, full-day assessment that combines essential screenings, diagnostics, and lifestyle consultations to support long-term well-being for women balancing multiple roles.

Who should avail this package?

Women aged 30 and above

Executives and professionals under high stress

Individuals with family history of lifestyle diseases

Those seeking proactive and preventive care

*As of September, 2025
Version 3.0*

About Us

Shinagawa Diagnostic & Preventive Care is a diagnostic center in the Philippines that offers a comprehensive range of Japanese-standard health screening services, imaging, and specialized diagnostics for the early detection and prevention of diseases.



8th and 23rd Floor, Ore Central Tower,
9th Avenue cor. 31st Street, BGC,
Taguig City 1630 Philippines

MAKE AN APPOINTMENT

Contact Us at our Patient Care Lines:



Landline (+632) 7368-5241
Globe (+63) 917-864-6762
Smart (+63) 962-067-3669



info@shinagawa-healthcare.ph



www.shinagawa-healthcare.ph



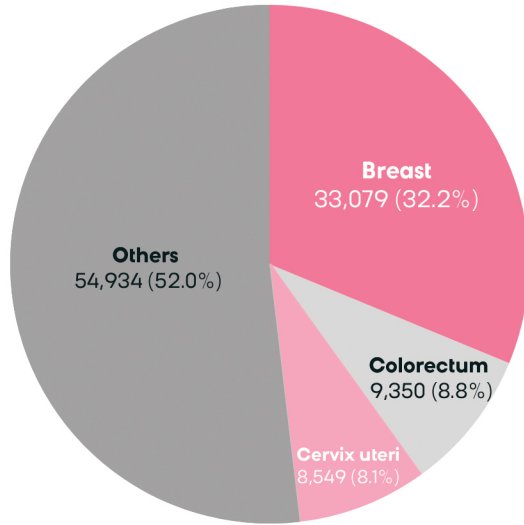
Women's Prime Executive Checkup

Preventive Health Screening



Leading Cancer Types Among Filipina Women (2022)

In the Philippines, Breast, Colorectal, and Cervical uteri have emerged as the three most common cancers types affecting many Filipina women. Specifically, breast and cervical cancers pose a significant threat as it only targets females.



International Agency for Research on Cancer (WHO), 2022

Beyond cancer detection, this health package also helps identify and address the following conditions:

Anemia & Leukemia

Diabetes

Cardiovascular Diseases

Vaginal or Cervical Infections

Benign Breast Cysts

Health Tests Included

To help you prepare and set your expectations, here's a step-by-step guide to the examinations included in the Women's Prime Executive Checkup.

01 Check-in



Receive your Patient Gown & Hotel Slippers upon check-in.

02 Medical Coordinator Screening



Our medical coordinator will provide a brief run-through of your procedures and essential tests.

03 Specimen Collection



Collect and submit urinalysis and stool samples using the provided patient invitation.

04 Physical Exam



Know your height, weight, body mass index, waist circumference, & blood pressure.

05 Comprehensive Blood Exams

CBC, FBS/HbA1c, Lipid Profile, Liver Function 1, Liver Function 2, Kidney Function, Uric Acid, Electrolyte, Infection, Tumor Markers (CEA, CA15-3, CA125)

Our blood tests provide a broader look at various functions of the body. These exams also include tumor markers that can detect cancers specific to women.

06 Eyesight



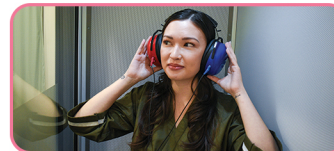
07 Tonometry



08 Fundus



09 Hearing



10 ECG



11 Chest X-ray



12 Whole Abdominal Ultrasound



13 Breast Ultrasound*



*The Breast Ultrasound can be upgraded to **Mammography 3D**, depending on the patient's age and condition.

14 Pap Smear



15 Optional Add-ons (Upon Recommendation)

1. Transvaginal Ultrasound
2. HPV Test
3. 2D Echo
4. Hormone Panel
5. Endoscopy (Transnasal Endoscopy, Gastroscopy, Colonoscopy)

By adding the recommended tests, there's a higher chance to detect health risks during the precancerous stage.

16 OB-Gyn/ Doctor's Consultation



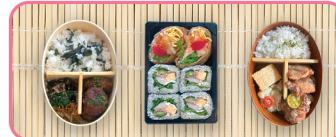
17 Same-day Laboratory Results



18 Check-Out



Exclusive Privilege



With this package, patients will receive a Japanese bento meal, which they can enjoy at our Executive Lounge on the 8th floor.