



A Health Package designed for Respiratory Health

Respiratory illnesses remain a major health concern in the Philippines, where air pollution, smoking, occupational exposures, and even seasonal viral infections increase risks for both acute and chronic lung conditions. Our Platinum Shinagawa Dock provides a clear understanding of your respiratory health, ensuring that potential issues are caught early and managed effectively.

Who should avail this package?

Adults aged 30 years old and above

Individuals with family history of lung or heart disease

High-risk occupations and working professionals in urban areas

Those seeking proactive and preventive care

As of September, 2025
Version 2.1

About Us

Shinagawa Diagnostic & Preventive Care is a diagnostic center in the Philippines that offers a comprehensive range of Japanese-standard health screening services, imaging, and specialized diagnostics for the early detection and prevention of diseases.



8th and 23rd Floor, Ore Central Tower,
9th Avenue cor. 31st Street, BGC,
Taguig City 1630 Philippines

MAKE AN APPOINTMENT

Contact Us at our Patient Care Lines:

 **Landline** (+632) 7368-5241

 **Globe** (+63) 917-864-6762

 **Smart** (+63) 962-067-3669

 info@shinagawa-healthcare.ph

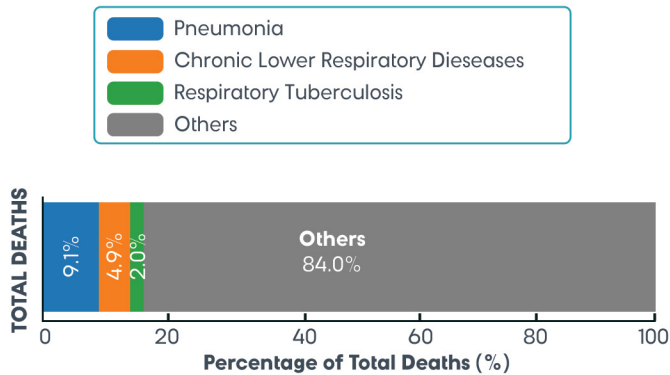
 www.shinagawa-healthcare.ph



Platinum Shinagawa Dock
Preventive Health Screening



Respiratory Health in the Philippines



According to a report from the Philippine Statistics Authority, three respiratory-related conditions were among the ten leading causes of death in the Philippines in 2024. Pneumonia ranked fourth, Chronic Lower Respiratory Diseases ranked seventh, and Respiratory Tuberculosis ranked eighth.

Additionally, the World Health Organization's Global Cancer Observatory identifies Lung Cancer as the second most prevalent cancer affecting Filipinos.

Double-Reading Method



At Shinagawa Diagnostic, our double-reading method reflects our Japanese-standard healthcare where imaging results are reviewed by both Filipino doctors and Japanese medical experts.

For procedures like Chest CT Scan, this dual expertise ensures greater accuracy, minimizes oversight, and provides patients with results they can fully trust.

Health Tests Included

To help you prepare and set your expectations, here's a step-by-step guide to the examinations included in the Platinum Shinagawa Dock.

01 Check-in



Receive your Patient Gown & Hotel Slippers upon check-in.

02 Health Checkup Orientation



Our medical coordinator will provide a brief run-through of your procedures and essential tests.

03 Specimen Collection



Collect and submit urinalysis and stool samples using the provided patient invitation.

04 Physical Exam



Know your height, weight, body mass index, waist circumference, and blood pressure.

05 Blood Exam

CBC, FBS/HbA1c, Lipid Profile, Liver Function 1, Liver Function 2, Kidney Function, Uric Acid, Electrolyte, Infection, Tumor Markers

06 Eyesight



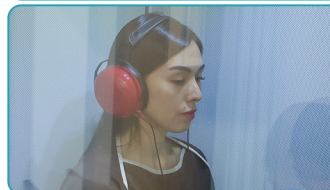
07 Tonometry



08 Fundus



09 Hearing



10 ECG



11 Chest X-ray



12 Upper Abdominal Ultrasound



Can detect or evaluate a range of health issues related to the liver, gallbladder, pancreas, and stomach.

13 Chest CT Scan



Can detect or evaluate a range of health issues related to the lungs, heart, and chest wall.

14 Optional Add-ons (Upon Recommendation)



15 Doctor's Consultation



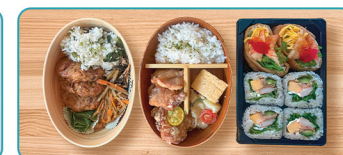
16 Nutrition & Dietetics Counseling



17 Check-Out



18 Exclusive Privilege



With this package, patients will receive a Japanese bento meal, which they can enjoy at our Executive Lounge on the 8th floor.