

Price List

VIP Shinagawa Dock is the top tier among our health packages with **Comprehensive Medical Examinations**, **Extensive Blood Exams**, together with various imaging services such as **Ultrasound**, **CT Scan**, **MRI**, and minimally invasive **Endoscopy** procedures such as:

VIP Shinagawa Dock	Testing Time	Price (PHP)
VIP Shinagawa Dock with Transnasal Endoscopy	4 Hours*	58,000
VIP Shinagawa Dock with Gastroscopy	5 Hours*	73,000
VIP Shinagawa Dock with Colonoscopy	2 Days	85,000

As of August, 2023



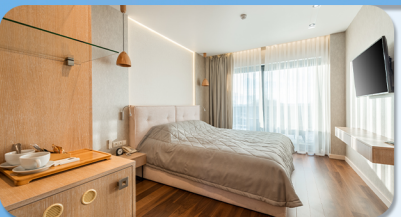
Depending on the patient's condition

Inclusive of Lunch

Inclusive of Lunch and Hotel Accommodation



DEAN & DELUCA
PHILIPPINES



Nearby Hotels around Ore Central Tower



Preparation prior the Endoscopy Procedure

- **Patients below 34 years old with comorbidities** are required to submit a CP Clearance 1 day prior their surgery.
- **Patients who are 35 years old and above** are also required to submit a CP Clearance 1 day prior their surgery.

About Us

Shinagawa Diagnostic & Preventive Care is a diagnostic center in the Philippines that offers a comprehensive range of Japanese-standard health screening services, imaging, and specialized diagnostics for the early detection and prevention of diseases.



8th and 23rd Floor, Ore Central Tower,
9th Avenue cor. 31st Street, BGC,
Taguig City 1630 Philippines

MAKE AN APPOINTMENT

Contact Us at our Patient Care Lines:



Landline (+632) 7368-5241
Globe (+63) 917-864-6762
Smart (+63) 962-067-3669



info@shinagawa-healthcare.ph



www.shinagawa-healthcare.ph



VIP

Shinagawa Dock

Preventive Health Screening



What is VIP Shinagawa Dock?

"Health checkup" is an examination of one's own health status to determine if there are any signs of illness.

"Shinagawa Dock" is also a part of a health checkup, but the major difference is the number of examination items. In addition to the contents of a health checkup, tests such as MRI, CT Scan, and Endoscopy are included.

The purpose of a "Shinagawa Dock" is to detect illnesses at an early stage that cannot be detected by a "Health Checkup" alone, and it is recommended that patients undergo once a year.

Inclusions Test Items

Brain MRI, Brain MRA, Neck MRA

Endoscopy: Transnasal Endoscopy, Gastroscopy, Colonoscopy

Chest CT Scan, Abdominal CT Scan

Abdominal Ultrasound, Kidney & Bladder Ultrasound

Consultation, Counseling

Physical Exam

Eyesight, Fundus, Tonometry, Hearing

Chest X-ray, ECG

Blood Exam, Tumor Markers

Urinalysis, Fecalalysis

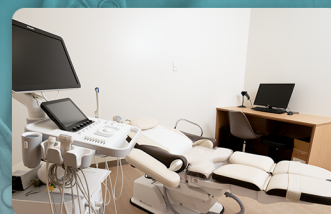


For women

an additional gynecological examination is recommended.

Health Items	Price (PHP)
Mammography 3D Pregnant X Breastfeeding X	6,000
Breast Ultrasound	3,000
Transvaginal Ultrasound Pregnant X Menstruating X	3,000
Pelvis MRI · Women: Uterus, Ovaries Pregnant X Menstruating X	15,000
Pap smear Pregnant X Menstruating X	2,500
HPV Pregnant X Menstruating X	9,500
Women's Menopause Test (FSH, LH, Estradiol)	5,000

As of August, 2023



VIP Lounge

This lounge is exclusively for those who have received their **Executive Health Checkup** and **VIP Shinagawa Dock**. After your medical checkup, you are invited to enjoy your meal at our lounge area.

Health Packages	VIP Shinagawa Dock	Hospital A	
Price (PHP)	58,000	56,000	
Basic Exam	Consultation / Counseling	✓	✓
	Physical Exam	✓	✓
	Eyesight	✓	
	Fundus / Tonometry	✓	
	Hearing	✓	
	Chest Xray	✓	✓
	ECG	✓	✓
	Urinalysis	✓	✓
	Fecalalysis	✓	✓
	Blood Exam	CBC	✓
FBS / HbA1c		✓	✓
Lipid Profile		✓	✓
Liver		✓	✓
Kidney		✓	✓
Electrolyte		✓	
Infection		✓	
Tumor Markers		✓	
Thyroid		✓	✓
Heart		✓	
Imaging Exam	Upper Abdominal Ultrasound	✓	
	Kidney & Bladder Ultrasound	✓	
	Chest CT Scan	✓	
	Whole Abdominal CT Scan	✓	
	Brain MRI / MRA	✓	
Neck MRA	✓		
Endoscopy *Select	✓		